



Leeds East
Primary Partnership
ACADEMIC YEAR 2021
Cross Gates
Primary School

Art: Drawing



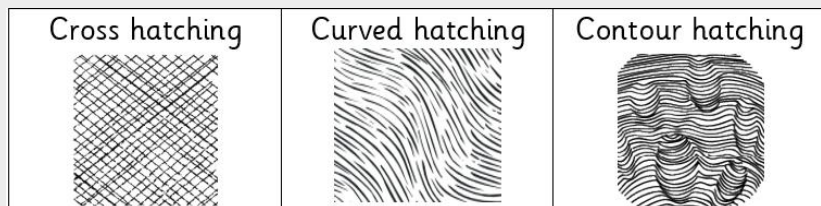
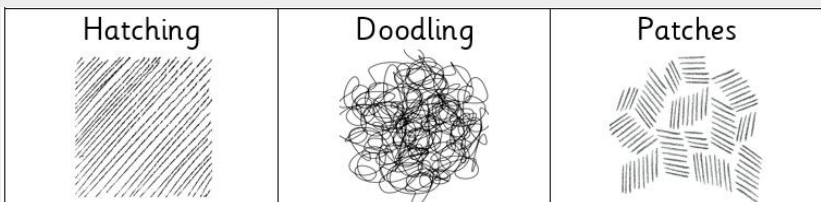
Leeds East
Primary Partnership
ACADEMIC YEAR 2021
Cross Gates
Primary School

Year Group: 4

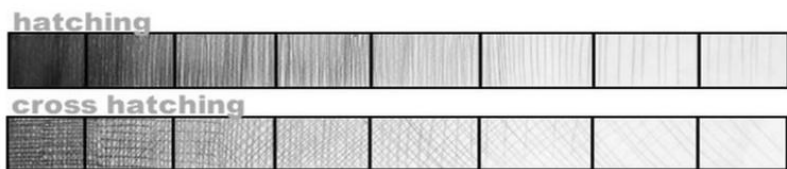
Subject Focus: Art

Term: Autumn 1

Skills:



Value Scales: Show shading from lightest through to darkest with various shades in-between

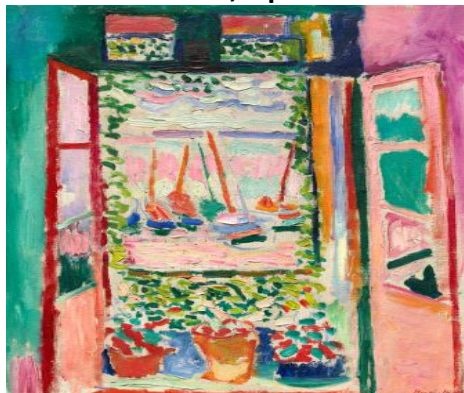


Tone to add definition:



Famous Artwork:

Henri Matisse, Open Window



Wassily Kandinsky, Farbstudie Quadrate



Wassily Kandinsky, Non-Objective



Key words:

| | |
|------------------|--|
| Cross hatching | adding straight, parallel lines, which face in a different direction, over hatching |
| Contour hatching | similar to regular hatching, but the lines will follow the curves or outline of the subject matter |
| Curve Hatching | small lines which are not straight |
| Hatching | used to create tonal or shading effects by drawing (or painting or scribing) closely spaced parallel lines |
| Blending | rubbing or smudging to create a gradual transition to soften lines |
| Tone / Tonal | providing a range of light to dark by shading with pencil |
| Proportion | the different sizes of the individual parts that make up one object |
| Pressure | the amount of force applied- this will determine the darkness of the piece. |
| Technique | various methods used by artists to create artwork |
| Precision | to be exact and use accuracy |

About the artists:

HENRI MATISSE

- Henri Matisse was born on December 31st, 1869.
- He was a French artist and is recognised as one of the leading figures in modern art.
- Matisse and Picasso were very good friends and were often compared.

WASSILY KANDINKSY

- Wassily Kandinsky was born in 1866 in Moscow, Russia.
- He is well-known for creating abstract paintings which were inspired by music.
- Kandinsky had a rare condition called synaesthesia where he saw colours when he heard music and heard music when he painted.